



NEWS RELEASE

Charter Township of Clinton • 40700 Romeo Plank Rd. • Clinton Township, MI 48038-2900
• 586-723-8045 • Fax: 586.228.1770

For Immediate Release

Date: June 15, 2008
Contact: Robert Cannon, Clinton Township Supervisor, 286-8000, Joseph A. Peruzzi/ Clinton Township Media Relations 586-723-8045, or Mary Neuman, Clinton Township Supervisor's Office, 586-723-8092.

DEDICATION OF GEORGE GEORGE MEMORIAL PARK A CELEBRATION OF COMMUNITY RECREATION, ENVIRONMENT AND HISTORY

CLINTON TOWNSHIP—George George Memorial Park will be dedicated to the public beginning at 11 a.m. Tuesday, July 1. The park off Moravian Drive just south of Cass Avenue will be presented to the residents of Clinton Township by the George family. Long-time residents of the township and one of the community's premier business groups, the George's constructed the park in honor of their grandfather.

The 30-acre park was donated to the township by the George family and was built without taxpayer funding. The park features a large children's play area and playscape, a covered public pavilion for picnics and other community gatherings, a fountain plaza area, and more than 5,000 feet of walking and bike paths. A fountain at the front gate welcomes visitors to the park that now represents one of the township's new jewels in its parks and recreation system.

Gathering music for the dedication will begin at 10 a.m. with the actual dedication ceremonies to start at 11 a.m. The event is open to the public. Brief remarks will be given by Clinton Township Supervisor Robert Cannon and Macomb County Historical Commission member Don Green. The ecological aspects of the park will be discussed by Department of Works

Superintendent George Westerman. James George Jr. will officially present the park to the township.

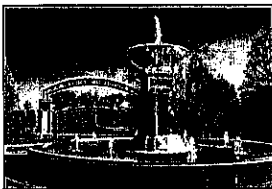
The dedication will also feature a presentation by the First Delaware Nation American Indian tribe from Moraviantown, Ontario, Canada. Members of the First Delaware Nation can trace their ancestry directly to the original inhabitants of the Moravian area in the 1780s.

Visitors to the dedication will be able to park their vehicles in the adjacent Hillcrest on the Park Condominium development off Moravian Drive as directed by the Clinton Township Police Department. Overflow parking will also be available in the new Meijer parking lot off Groesbeck and south of Cass Avenue. Shuttle service will be available. Visitors may bring lawn chairs and blankets.

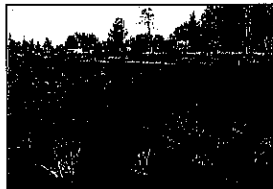
The park is a facility that all visitors can enjoy. It represents some of the best ideas in passive recreation uses. The walking and bike paths allow for a picturesque tour of the park by encircling the entire 30-acre facility. A nature trail will also traverse the park through a wetlands area and natural prairie. The park includes benches, picnic tables and a public bathroom.

George George Memorial Park includes a number of environmentally friendly features. A rain garden, in addition to being a destination of natural beauty, doubles as a specialized storm water basin management system. The rain garden allows melted snow and rain from the park's parking lot and path system to slowly soak into the ground and not into the storm water sewer system. This natural approach improves local water quality while creating a beautiful natural area that will attract birds and butterflies. The rain garden will also serve as an outdoor classroom for local school children in science and environmental classes.

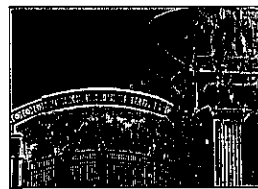
GEORGE GEORGE MEMORIAL PARK FEATURES



Entrance Fountain



Rain Garden



Park Gateway



Playscape

Date: June 15, 2008

Contact: Macomb County Historical Commission member Don Green 586-263-0168, or Joseph A. Peruzzi/Clinton Township Media Relations 586-723-8045.

FIRST DELAWARE NATION INDIAN TRIBE RETURNS TO THEIR ORIGINAL HOME TO HELP DEDICATE NEW GEORGE GEORGE MEMORIAL PARK

CLINTON TOWNSHIP—Members of the First Delaware Nation American Indian tribe will return to Clinton Township on Tuesday, July 1 to help dedicate the new George George Memorial Park. More than 20 members of the tribe will travel from Moraviantown, Ontario, Canada to take part in the park dedication. Gathering music for the dedication will begin at 10 a.m. with the actual dedication to start at 11 a.m.

Members of the tribe plan to bless the land that is now the George George Memorial Park and will also conduct a Powwow dancing demonstration during the dedication ceremony.

Members of the First Delaware Nation originally lived with the Moravian missionaries in the 1780s on the same land that is now the George George Memorial Park, the Woodrow W. Woody Park on the banks of the Clinton River and adjacent lands along Moravian Drive. The mission settlement of about 130 people was called New Gnadenhutzen (tents or huts of grace). In 1786 the settlement was abandoned with its members eventually settling in Moraviantown, Ontario on the banks of the Thames River.

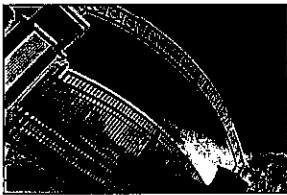
Interestingly, the settlers in order to keep in touch with the fort in Detroit constructed a road from

the settlement to what was then Conners Creek at the edge of the fort. That road is now called Moravian Drive and was the first inland road in Michigan. Members of the tribe last returned to Clinton Township in 2000 to dedicate the Woodrow W. Woody Park. Many of the Delaware Nation now living in Moraviantown can trace their ancestry directly to the people who lived in New Gnadenhutzen from 1782-86.

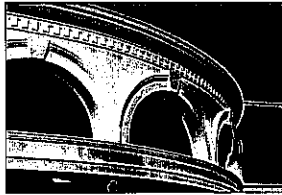
Dedication ceremonies will be open to the public. Clinton Township Supervisor Robert Cannon will host the event with remarks to be provided by Macomb County Historical Commission member Don Green and Department of Public Works Superintendent George Westerman who will speak on the ecological aspects of the park. James George Jr. will officially present the park to the township.

Visitors to the dedication will be able to park their vehicles in the adjacent Hillcrest on the Park Condominium development off Moravian Drive as directed by the Clinton Township Police Department. Overflow parking will also be available in the new Meijer parking lot off Groesbeck and south of Cass Avenue. Shuttle service will be available. Visitors may bring lawn chairs and blankets.

GEORGE GEORGE MEMORIAL PARK FEATURES



Entrance Gate



Pavilion Exterior



Plaza Area Planting



Park Nature Trails